



Rural Center grant puts NE NC on lead for Wind Energy

In March, 2011, Albemarle Resource Conservation & Development Council (RC&D) received a \$200,000 Economic Innovation Grant from the NC Rural Center to demonstrate the local economic impact of wind energy in rural Northeast North Carolina.

Over a two year period, the project will train local residents on the installation and maintenance of met towers and wind turbines and is expected to bring additional jobs to the region. Core curriculum is being developed through a coordinated effort by Appalachian State, COA and ECSU in conjunction with the Northeast Workforce Development Board.

Renewable energy outcomes will be used to educate county leaders, school districts, utility companies and the general public to demonstrate the value of harnessing wind energy. The project will also install wind turbines on school campuses and develop the K-12 curriculum to educate students about renewable energy. The project is expected to create a business model to drive local decision making and to attract future investment in the renewable energy sector.

Partners on the project include Elizabeth City State University, Northeast Workforce Development Board, College of the Albemarle, Dare County Schools, NC Solar Center, Appalachian State University, UNC Coastal Studies Institute, Alpha Energy, ECWindPower and



Students at COA-Edenton will be trained to install and repair Meteorological (Met) Towers. Met towers provide key data for community wind energy projects in the area.



Schools in Dare and Currituck Counties have been selected to receive the first of four Wind Turbines.

SAVE THE DATE

Albemarle RC&D's Annual Awards Banquet will be December 6, 2011 at the Vernon James Center in Plymouth. Back by popular demand, the Silent Auction will begin at 5:30, followed by dinner and presentation of the awards.

Ecotourism opportunities grow at Merchants Millpond State Park



One of 3 newly constructed camping platforms on Bennett's Creek

Construction is in the final stages to complete 3 raised camping platforms and 3 primitive campsites along Bennett's Creek in Merchants Millpond State Park. Completion is targeted by the end of September in anticipation of a busy Fall for visitors to the park.

Many of the park's 200,000+ visitors each year come to paddle the Millpond and Bennett's Creek, and the addition of the campsites will provide a much needed resource for the Albemarle Regional Paddle Trail System and the NC Paddle Trails System. The primitive campsites will be equipped with grills and picnic tables.



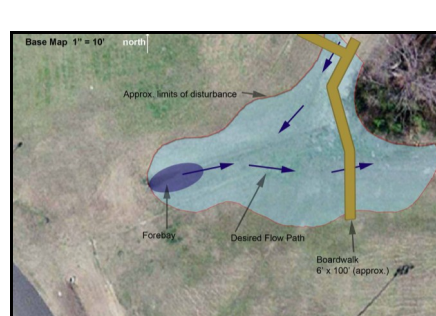
Canoe and kayak access to the raised camping platforms

The project is made possible through a grant from the North Carolina Recreational Trails Program. Other project partners include Merchants Millpond State Park, the NC Department of Environment and Natural Resources, the Division of Parks and Recreation and the State Trails Program.

The Albemarle RC&D Council assisted with the grant application and is providing project design and management support.

Elizabeth City Middle School Constructed Wetland

Elizabeth City Middle School in Pasquotank County is joining a growing number of educational facilities to add a constructed wetland and outdoor educational facility to its school campus. The functional wetland will reduce sediment, reduce water velocity and filter toxicants from the school's stormwater before water enters the natural wetlands of the Pasquotank River.

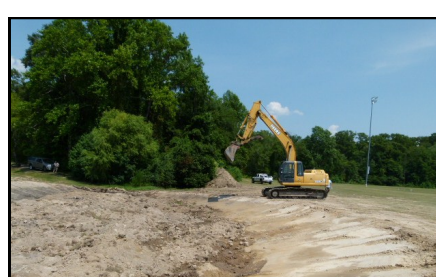


A handicap accessible boardwalk across the constructed wetland will provide access to students for educational activities.

A 100' boardwalk constructed across the wetland will allow students to study wetlands ecology and environmental function and will be used for other educational activities by students, faculty and the general public. Students will be involved in planting the wetland in September after classes resume.

This project is made possible through a grant from the Albemarle-Pamlico National Estuary Program to the UNC Coastal Studies Institute.

Albemarle RC&D is providing technical and administrative support to design and construct the wetland and boardwalk. Elizabeth City Middle School faculty and administration and Elizabeth City Pasquotank Public Schools are also partners on the project.



Construction on the wetland started in July. The project will be completed in September.

State RC&D Association honors Albemarle RC&D

The North Carolina Association of RC&D Councils (NCARCDC) selected Albemarle RC&D from nominations submitted by 10 NC Councils to receive the honors of the association:

2011 Outstanding Project of the Year

The **Regional Demonstration Project in Renewable Energy** (see the article on wind energy earlier in this publication) was selected "in recognition of the mission to craft a vision to establish northeast NC as a leader in the research and uses of innovative renewable energy systems...The project exemplifies the importance of balancing social, economic and environmental concerns with a local focus".

2011 Outstanding Performance by a Coordinator

Mark Powell was recognized for his "skills, knowledge and experience which allow him to provide technical support and leadership to a wide range of Albemarle R&D projects that support natural resource conservation and economic and community development".

2011 Outstanding Program Assistant

Linda Peterson was recognized for her advancement of administrative and program functions which resulted in Albemarle R&D achieving Tier II membership in the National RC&D Association's Circle of Diamonds. Albemarle was the sixth Council in the nation to be recognized for its exemplary business standards and management practices.

New Members Appointed to RC&D

As an independent, non-profit organization committed to the conservation of natural resources and local economic development, Albemarle RC&D relies on its volunteers who are appointed by the Board of Commissioners and the Soil & Water Conservation District in each county of the Albemarle Region. We welcome our newest members:

- Camden County Garry Meiggs
- Chowan County Jeff Smith
- Dare County Michael Barr
- Pasquotank County Michele Aydlett
- Washington County Woody Collins

RC&D On-Going Projects

- Currituck County**
Currituck Rural Life Center Boardwalk and Canoe/Kayak Access
- Dare County**
Manteo High School Constructed Wetlands and Outdoor Classroom
First Flight Schools Wetlands and Outdoor Classroom Phase II
- Gates County**
Merchants Millpond State Park Paddle Camping Platforms
- Pasquotank County**
River Road Middle School Constructed Wetlands
Elizabeth City Middle School Wetlands
- Tyrrell County**
Alligator & Goat Neck Community House Lifting and Septic Tank Repair
Alligator & Goat Neck Communities Renewable Energy and Energy Efficiency
- Tyrrell/Washington Counties**
Bonarva Overlook and Canoe Trail
- Washington County**
Plymouth Riverfront Renovation, Phase II
- Regional Projects**
Renewable Energy for Rural Communities

RC&D Calendar

10/20/2011, 6:00 pm, Albemarle RC&D Executive Committee Meeting

12/6/2011, Annual Awards Banquet Vernon James Center (Plymouth) Silent Auction at 5:30, Dinner at 6:30 followed by awards presentation. RSVP 252-482-7437 x118

The Albemarle RC&D Council is a 501(C)(3) private non-profit organization that serves the people of Camden, Chowan, Currituck, Dare, Gates, Hyde, Pasquotank, Perquimans, Tyrrell & Washington Counties

730 N. Granville St., Suite B, Edenton, NC 27932

Tel: 252-482-7437, Ext 4; Fax: 252-482-3428; albemalrercd@yahoo.com

www.albemalrercd.org

All programs and services of the Albemarle RC&D Council are offered on a non-discriminatory basis, without regard to race, color, national origin, religion, sex, sexual orientation, age, marital or family status, disability or political beliefs.

Questions or Comments? Contact albemalrercd@yahoo.com

or call 252-482-7437, ext 118